



**Anthropology 2008W
Spring 2012**

**FOUNDATIONS OF
ANTHROPOLOGICAL
THOUGHT**

**Tues.-Thurs. 12:45-2:00
Duques 362**

Prof. Catherine Allen
2110 G St., NW, Room 303
kitallen@gwu.edu; 202-994-7545
Office Hours: T 11:00-12:30; Th 2:15-4:00; or by appt.

Instructional Assistant
Evy Vourlides
evy_v@gwmail.gwu.edu

This class will introduce you to theories underlying thought and research in anthropology. We'll trace the historical development of anthropology as a field of study and explore the works of major theorists. Our goal is to prepare you to understand and evaluate anthropological research and writing, and to provide you with a basis for interpreting data within a theoretical framework.

While dates and definitions are part of what you'll learn in this class, the more fundamental objective is to help you begin to understand and use the different (often competing) ideas that have shaped our field. Your participation in our class discussions is essential to this project. There are many others ways to participate as well. For example, you can find outside sources to post on Blackboard, or put special effort into our on-line discussions. Also, please keep in mind that active listening is essential to constructive dialogue. Our conversations should be characterized by reciprocity, respect, clarity, civility (and hopefully humor).

TEXTS:

1. *Visions of Culture: An Introduction to Anthropological Theories and Theorists* (3rd edition) by Jerry D. Moore
2. *Visions of Culture: An Annotated Reader* edited by Jerry D. Moore
3. Some additional readings will be posted on Blackboard

COURSE REQUIREMENTS:

A. Attendance and participation

I expect you to attend every class and to arrive on time. When at all possible, you should inform me ahead of time if you will have to miss class (for a religious holiday, for example). Leaving class early is not acceptable unless arranged in advance. Cell phones and laptop computers should be turned off.

B. Reading Assignments

It's important that you keep up with the schedule of reading assignments and come to class prepared to discuss them. There are some heavy reading assignments so it's a good idea to plan ahead. Don't try to leave assignments until the last minute!

C. Quizzes

There will be three short quizzes to be sure you have your titles, authors and chronology straight.

D. Weekly On-line Discussions

Each Friday I'll post questions related to the next week's reading assignments. You are to post at least two entries: (1) a response to one of the questions (posted by noon Tuesday); (2) a reply to another student's entry preferably to a different question (posted by noon Wednesday). I'll check the entries but I won't grade them until the end of the semester when you submit what you consider to be your best 5 entries.

E. Writing Assignments:

This course is Writing Intensive, so you'll have a series of writing assignments of different kinds.

[1] Critical essay:

In Blackboard electronic reserves you will find several selections from Taking Sides: Clashing Views on Controversial Issues in Anthropology and Taking Sides: Clashing Views on Controversial Issues in Cultural Anthropology edited by Kirk M. Endicott & Robert L. Welsch. Each selection presents a pair of articles taking opposite sides of a particular issue. Your assignment is to choose one of these selections and write a 5-7 page essay in which you evaluate the opposing positions, paying special attention to how the authors reach conclusions from their data. You'll turn in a working draft which will be **peer reviewed**.* (Due dates for the draft and the finished essay are indicated on the schedule below.)

(2) Review article on a important issue in anthropology:

You'll select a small group of works that addresses an anthropological theme or question and write a 12-15 page paper in which you:

- Review the authors' arguments and use of data.
- Discuss how the authors' ideas complement or contradict each other.
- Explore the intellectual and historical context in which their ideas developed.
- Assess the implications for your own thinking and development as an anthropologist.

You'll turn in a working draft which will be **peer reviewed**.*

(3) Online Discussion Entries: You'll select five entries from the weekly online discussion and submit them to me.

CALCULATION OF GRADES:

12%	Participation & attendance (includes weekly participation in on-line discussion)
18%	3 Quizzes (Quiz 1=5%; Quiz 2=5%; Quiz 3=8%)
20%	Critical Essay
30%	Review article
<u>20%</u>	5 Best On-line Discussion Entries
100%	TOTAL

*Although **Peer Reviews** do not count a percentage of your grade, they are **required** (because you owe this to your fellow students). Failure to do the peer review will lower your final grade by half a letter.

ACADEMIC INTEGRITY

I personally support the GW Code of Academic Integrity. It states:: “Academic dishonesty is defined as cheating of any kind, including misrepresenting one’s own work, taking credit for the work of others without crediting them and without appropriate authorization, and the fabrication of information.” For the remainder of the code, see: <http://www.gwu.edu/~ntegrity/code.html>

SUPPORT FOR STUDENTS OUTSIDE THE CLASSROOM***DISABILITY SUPPORT SERVICES (DSS)***

Any student who may need an accommodation based on the potential impact of a disability should contact the Disability Support Services office at 202-994-8250 in the Marvin Center, Suite 242, to establish eligibility and to coordinate reasonable accommodations. For additional information please refer to: <http://gwired.gwu.edu/dss/>

UNIVERSITY COUNSELING CENTER (UCC) 202-994-5300

The University Counseling Center (UCC) offers 24/7 assistance and referral to address students' personal, social, career, and study skills problems. Services for students include:

6. crisis and emergency mental health consultations
 7. confidential assessment, counseling services (individual and small group), and referrals
- <http://gwired.gwu.edu/counsel/CounselingServices/AcademicSupportServices>

SECURITY

In the case of an emergency, if at all possible, the class should shelter in place. If the building that the class is in is affected, follow the evacuation procedures for the building. After evacuation, seek shelter at a predetermined rendezvous location.

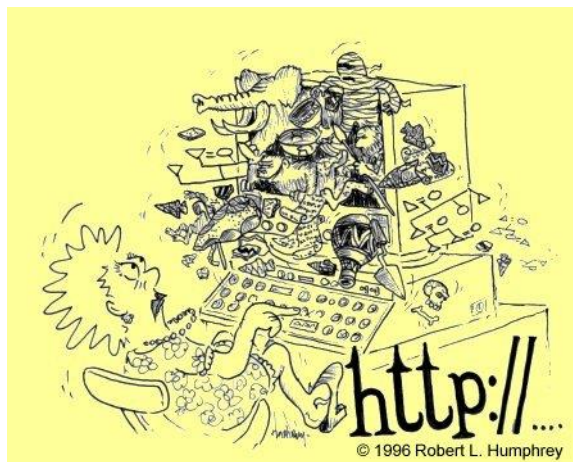
SCHEDULE OF ASSIGNMENTS

Jan.17 (T) Introduction to the course

Jan.19 (Th)

Kuhn, excerpts from *The Structure of Scientific Revolutions*

Darwin excerpts from *Origin of Species* and *Descent of Man* (both posted on Blackboard)



FOUNDERS

Paradigms Found: Unilineal Evolutionism

Jan. 24 (T) 19th century overview

Bee, *Patterns and Processes*, ch.2

Spencer, “Progress: Its Law and Causes” (both posted on Blackboard)

Jan. 26 (Th) Tylor

Chapter 1 in *Visions* text and *Visions* reader

Morgan

Chapter 2 in *Visions* text and *Visions* reader

Durkheim: Social Facts, Solidarity and Collective Consciousness

Jan. 31 (T) Durkheim

Chapter 4 in *Visions* text

“What is a Social Fact” (posted on Blackboard)

Feb. 2 (Th) Durkheim

Chapter 4 in *Visions* reader

Paradigms Smashed : Boas in America

Feb.7 (T) Boas

Chapter 3 in *Visions* text and *Visions* reader

THE NATURE OF CULTURE

American Anthropology, the Next Generation

Feb. 9 (Th) Kroeber

Chapter 5 in *Visions* text and *Visions* reader

FILM in class: *Ishi in Two Worlds*

Feb.14 (T) Sapir

Chapter 7 in *Visions* text and *Visions* reader

K Draft of Critical Essay due by noon (e-mail)

Culture and Personality

Feb. 16 (Th) Benedict

Chapter 6 in *Visions* text and *Visions* reader

Mead

Chapter 8 in *Visions* text and *Visions* reader

Feb. 21 (T) Quiz

FILM in class: *Margaret Mead: An Observer Observed*

THE NATURE OF SOCIETY**Gifts and Counter-Gifts****Feb. 23 (Th)** MaussChapter 9 in *Visions* text and *Visions* reader**K Peer Review of Critical Essay due by e-mail****Feb.28 (T)** MalinowskiChapter 10 in *Visions* text and *Visions* reader**K Review article topic due****British Structural-Functionalism****Mar. 1 (Th)** Radcliffe-BrownChapter 11 in *Visions* text

“Joking Relationships” (posted on Blackboard)

(Chapter 11 in *Visions* reader is recommended)**Mar. 6 (T)** Evans-PritchardChapter 12 in *Visions* text and *Visions* reader**Leach**Introduction to *Political Systems of Highland Burma* (posted on Blackboard)**Mar. 8 (Th)** Catch-up and Review**K Mar 9 (F)** Final Critical Essay due by e-mail, 6 pm.**SPRING BREAK****EVOLUTIONARY, ADAPTATIONIST AND MATERIALIST THEORIES****Paradigms Regained: Neo-Evolutionism****Mar. 20 (T)** WhiteChapter 13 in *Visions* text and *Visions* reader**Steward**Chapter 14 in *Visions* text and *Visions* reader**Cultural Materialism, Marxism and Feminism****Mar. 22 (Th)** HarrisChapter 15 in *Visions* text and *Visions* reader**Leacock**Chapter 16 in *Visions* text and *Visions* reader**Mar. 27(T)** Quiz**STRUCTURES, SYMBOLS AND MEANING****Deep Structures****Mar. 29(Th)** Levi-StraussChapter 17 in *Visions* text

“The Story of Asdiwal” (posted on Blackboard)

(Chapter 17 in *Visions* reader is recommended)**Symbols and the Drama of Social Life****Apr. 3 (T)** TurnerChapter 18 in *Visions* text and *Visions* reader**Douglas**Chapter 20 in *Visions* text and *Visions* reader**Interpretive Anthropology****Apr. 5 (Th)** GeertzChapter 19 in *Visions* text and *Visions* reader

Apr. 10 (T) **Ortner**
 Chapter 22 in *Visions* text and *Visions* reader
Fernandez
 Chapter 21 in *Visions* text
 (Chapter 21 in *Visions* reader is recommended)
K Review Article draft due

A Theory of Practice

Apr. 12 (Th) **Bourdieu**
 Chapter 23 in *Visions* text and *Visions* reader
 "The Production and Reproduction of Legitimate Language" (posted on Blackboard)

Agency and Power

Apr. 17 (T) **Wolf**
 Chapter 24 in *Visions* text and *Visions* reader
Sahlins
 Chapter 25 in *Visions* text and *Visions* reader
K Review Article peer review due

Anthropology in a globalizing world

Apr. 19 (Th) **Appadurai**
 "Global Ethnoscapes" " (posted on Blackboard)

Apr. 24 (T) **Catch-up and Review**

Apr. 26 (Th) **Quiz**
Discussion: "Taking Sides" revisited

K April 30(M) **Five Best Posts due**

K May 8 (T) **Final Review Article due**

SUMMARY OF DUE DATES

If any of these dates are changed, the change will be posted on the Blackboard Announcements page.

Feb 14	Draft of Critical Essay due
Feb 21	Quiz
Feb 23	Peer Review of Critical Essay due
Feb 28`	Review article topic due
Mar 9 (F)	Final Critical Essay due
Mar 27	Quiz
Mar 30 (F)	Paper draft due
April 10 (T)	Review article draft due
April 17	Review article peer review due
April 26	Quiz
April 30(M)	Five Best Posts due
May 8 (T)	Final Review Article due